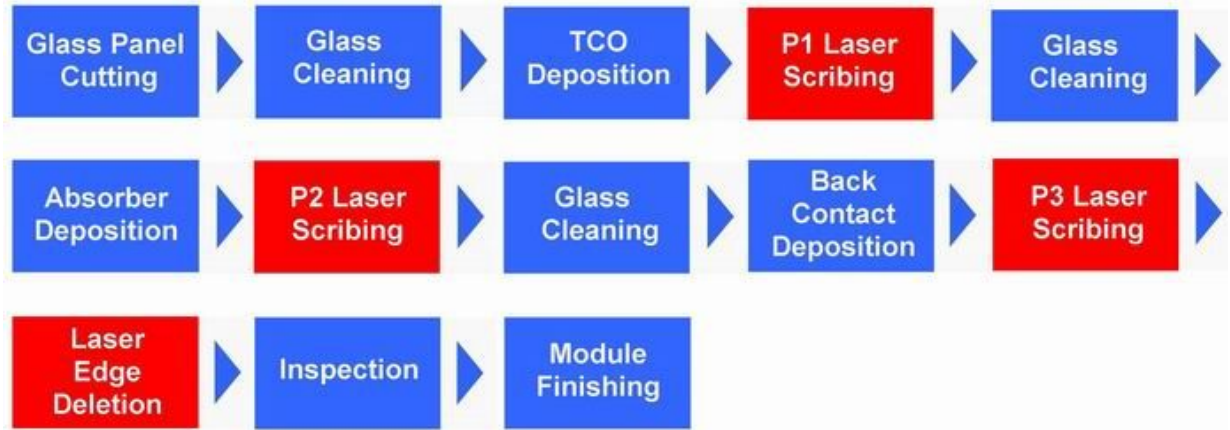
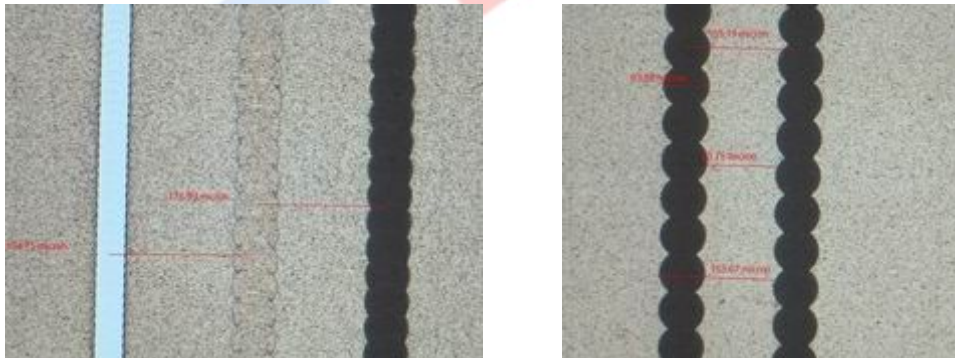


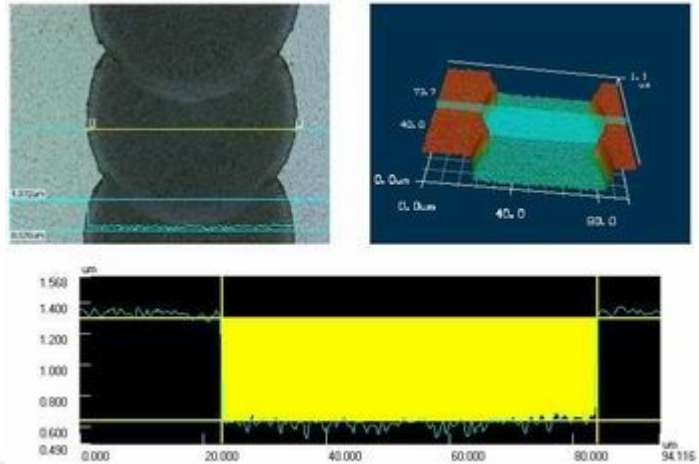
Thin film scribing P1, P2, P3



Application: Laser scribing for Thin film solar cells P1 /P2/ P3.



X-Y axis liner motor , 1500 mm/s
Granite stage;
1064nm or 532nm laser ;
CCD alignment system
non-contact air bearing system
Speed: 60S/piece
Line width: $50 \pm 10 \mu\text{m}$
Dead area: $< 300 \mu\text{m}$



Specification:

Wavelength: 1064 nm\532nm
Accuracy: $\pm 20 \mu\text{m}$
Spot Size: 40~60 μm
Repeating accuracy: $\pm 10 \mu\text{m}$
Speed : 1500mm/s
Power Supply: 380V / 40 A
Light Beam: 4 beams
Dimension: 4040*2140*1800mm
Pass line: 1025 mm
Weight: 6000 kg

For more details, please contact dr@drlaser.com.cn; 86-27-87922379.