

Laser Edge-deletion



For electrical isolation and hermetic sealing of the module, the complete removal of all layers from the edges of fully processed thin film solar cells on glass substrates is required. And the laser edge deletion technology is a big challenge for the conventional techniques, like sand blasting and grinding.

Resistance: > 1G Ω (at1000V)

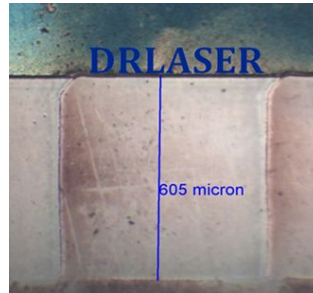
X-Y axis liner motors

Granite stage

1064nm laser

non-contact air bearing system

Speed: 60S/pc



Specification:

Wavelength: 1064 nm
Accuracy: $\pm 20\mu\text{m}$
Spot Size: $650\mu\text{m}$
Repeating accuracy: $\pm 10\mu\text{m}$
Speed : 10~15cm/s
Power Supply: 380V / 40 A
Light Beam: 1 Scanner
Dimension: 4040*2140*1800mm
Pass line: 1025 mm
Weight: 6000 kg

For more details, please contact dr@drlaser.com.cn; 86-27-87922379.